

Java EE hybrid activity

Follow the instructions below to

1. Download Netbeans with JEE support
2. Download and install JEE 7 SDK update 1
3. Run the Address Book example Application

Installing NetBeans IDE and GlassFish 4 installation

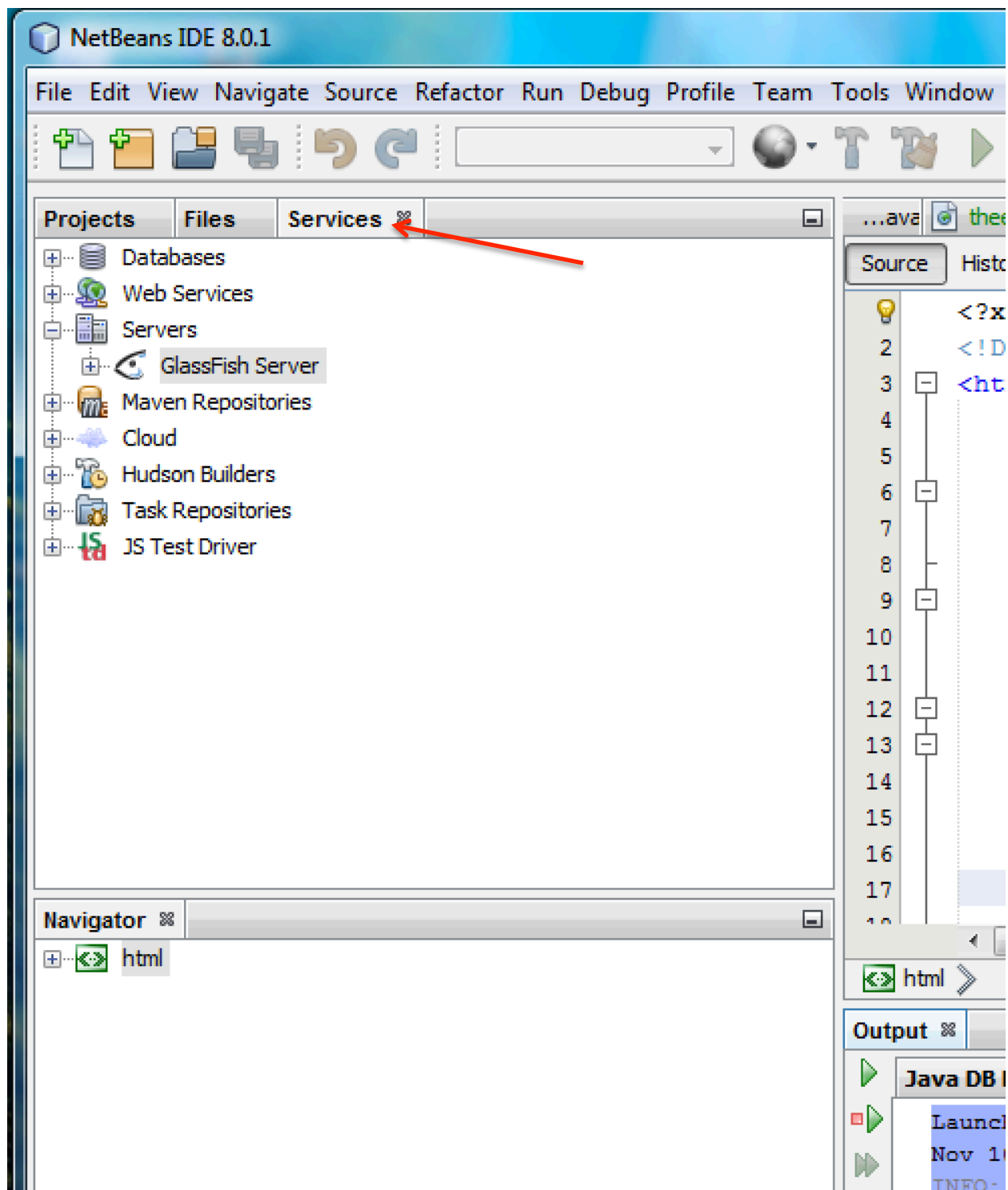
The NetBeans integrated development environment (IDE) is a free, open-source IDE for developing Java applications, including enterprise applications. NetBeans IDE supports the Java EE platform. You can build, package, deploy, and run your Java EE applications from within NetBeans IDE.

Step 1: Download and install Netbeans with JavaEE support (Glassfish is bundled -- but you **won't** use that copy of glassfish that the Netbeans bundle will place in C:\Program Files\glassfish4). You can download NetBeans from <http://www.netbeans.org/downloads/>

Step 2: Download Java EE from <http://www.oracle.com/technetwork/java/javaee/downloads/java-ee-sdk-7-downloads-1956236.html> (you should already have the latest SE JDK installed). When you install/extract this zip file, place it the root of your C: drive, so you will end up with C:\glassfish4.

NOTE: We are installing GlassFish Open Source Edition 4.1

Step 3: Run Netbeans, select the Services tab, and under Servers, remove the default Glassfish server by right clicking on it and selecting "Remove" (see below). Then, right click on Servers and select Add Server, then follow the wizard for "Glassfish Server" and select your C:\glassfish4 directory as the installation directory. Accept the defaults throughout the rest of the wizard.



Starting and Stopping the GlassFish Server using NetBeans

To *start* the GlassFish Server:

1. Launch NetBeans.

- Applications -> Programming -> NetBeans IDE
2. Click the **Services** tab.
 - Don't see the Services tab? Window -> Services
 3. Be sure you've added the JEE Server you downloaded separately from Netbeans, and that you placed in C:\glassfish4.
 4. Expand the **Servers** node.
 5. Right-click the GlassFish Server instance and select **Start**.
 6. Right-click the GlassFish Server instance and select **View Server Log**.
 - notice the output from the GlassFish Server

Note: NetBeans is configured by default to also start the Java DB server when starting GlassFish.

In NETBEANS:

To *stop* the GlassFish Server:

1. Right-click the GlassFish Server instance and select **Stop**.

To *restart* the GlassFish Server:

1. Right-click the GlassFish Server instance and select **Restart**.

To *refresh* the GlassFish Server:

1. Right-click the GlassFish Server instance and select **Refresh**.

Starting the Administration Console

To administer the GlassFish Server and manage users, resources, and Java EE applications, use the Administration Console tool. The GlassFish Server must be running before you invoke the Administration Console. To start the Administration Console, open a browser at <http://localhost:4848/>

Starting and Stopping the GlassFish Server using NetBeans

1. Click the **Services** tab.
2. Expand the **Servers** node.

3. Right-click the GlassFish Server instance and select **View Admin Console**.

Note: NetBeans IDE uses your default web browser to open the Administration Console.

Java EE Tutorial Example Applications

The tutorial example source is contained in the tutorial component which should already be installed (unzipped) in **C:\glassfish4\docs\javaee-tutorial** and the example projects will be under **C:\glassfish4\docs\javaee-tutorial\examples**

Run the Address Book Example Application

To run the same 3-tier application we discussed in the classroom lecture, select File->Open Project and browse to C:\glassfish4\docs\javaee-tutorial\examples\persistence\address-book , and run the application. When asked, specify that you will run it on your Glassfish server. If all is well, Netbeans will launch your web browser with the URL of your Address Book JSF application.

Similar JSF Application from scratch

You can quickly write a simple application similar in structure to the Address Book application, from scratch, using Netbeans. To do so, follow the instructions in this document

<http://netbeans.org/kb/docs/javaee/javaee-gettingstarted.html>